

ç Š Œ € ů  
† § ŷ Ÿ đ  
È à → Đ ř  
ß Æ ð V ē  
ň Ū ž £ þ  
ð þ ů D t  
k Ŕ ě 7 ā  
ě ĵ @ G H

EXPO SANS  
Pro  
Condensed

*A Typeface Family  
in Five Weights*



**TypeCulture**<sup>®</sup>  
[www.typeculture.com](http://www.typeculture.com)

a R Q ∂ ŵ

& 3 ← H œ

G ğ Ẅ ř ħ

§ Ł ct S ę

ÿ Ů ž 8 μ

¶ p ħ q ô

ĝ Ď ů 5 ß

ċ ŋ & O €

# Expo Sans™ PRO Condensed

THE NATURE OF A SANS SERIF TYPEFACE lends itself to variation and so it was inevitable that TypeCulture's popular Expo Sans family would continue to grow. A new condensed style in almost all Expo Sans weights (sorry, the Black and Black Italic were not inclined to go along with the idea) enlarges the field of application for the whole Expo Sans and Expo Serif typeface superfamily.

The development of Expo Sans Pro Condensed began in 2009 and was finished a year later. The idea of it seems simple, but make no mistake: a uniform narrowing of the Expo Sans fonts would never have sufficed to arrive at the quality letter forms you're reading here. An entire schedule of proportional changes was necessary to create a condensed version of the original fonts that looked and felt right. To create proportionally compatible forms, some glyphs were made 50% narrower while others were made only 10% narrower, with many varying percentages in between depending on the original form.

The result is a well-balanced and handsome design capable of responding to hundreds of typographic challenges with character and style. Applicable to everything from textbooks to newspapers to listings, these handsome additions to Expo Sans give you the flexibility and efficiency you need when working in limited spaces and with particularly narrow measures, all the while imparting Expo Sans' inimitable warmth and readability to your texts.

---

Before generating this PDF, the type in this specimen was converted to outlines and separated from the font file to prevent illegal font extraction. This may cause the type in this document to appear heavier in laser output. This will not happen when you use Expo Sans Pro Condensed on your own computer; instructions (*hints*) embedded in the fonts will maintain the crispness and consistency of each glyph in your output.

Expo Sans Pro Condensed: typeface design and trademark  
© 2010 Mark Jamra. All Rights Reserved.

Licenses for this and other typeface families  
can be purchased at [www.typeculture.com](http://www.typeculture.com).

**Apples & Pomegranates @ \$6.00 per basket**

*Tos lès-omes vinèt-st-à monde libes, èt so-l'minme pîd po çou qu'ènn'èst d'leu*

**Song & Dance Performance**

THE ANIMAL KINGDOM: Where the wild things roam free

**National Bank of Augusta**

It's about  $6\frac{5}{8}$  cm, thus  $8^4+90 \geq 75\mu\text{F}$ , but only if  $w^2=13^\circ\text{F}$ , based on

Menn eru gæddir vitsmunum og samvisku, og ber þeim að breyta bróðurlega

**Sie bezahlen ja nur: 38.00€**

The International Association for Philosophical Awareness

**PARK ENTRANCE →**

*The Buxtenheim School of Design & New Media*

Die Hansastraße 24 ist genau  $6\frac{1}{2}$  km von der Deichallee

**← CONFERENCE PARKING**

Všichni lidé rodí se svobodní a sobě rovni co do důstojnosti a práv. Jsou radáni

**National Science Museum**

*The Christmas Holiday Celebration*

Wszyscy ludzie rodzą się wolni i równi pod względem swej godności i swych

**High Level of Quality**

AQUÍ TIENE LAS ENTRADAS: ¡Que se diviertan!

*It's about  $9\frac{4}{5}$  in width, thus  $2^3 \times 28 \neq 36+9$ , but only if  $w=85 \geq 14 \neq 72=5^{10}$*

**SYSTEM SECURITY**

Bütün insanlar hür, haysiyet ve haklar bakımından eşit doğarlar. Akıl ve

**STATE WILDLIFE PRESERVE →**

*The element begins as  $\text{H}_2\text{O}$  and is eventually converted into  $\text{CO}_2$ ?*

*What £25.00 will buy this season!*

**The Rankin College of Law • Building A3**

*Visi cilvēki piedzimst brīvi un vienlīdzīgi sacā paācieðā un tiesībās. Viði ir apveltiti*

**Campers Encounter Wildlife**

With \$39 or 20€, there is a difference of  $4\frac{3}{16}$  cents

**Fashion Report: Trends & Styles**

## FINANCIAL HIGHLIGHTS

The following tables describe the performance for each share class for the fiscal periods indicated. All information (except portfolio turnover rate) reflects financial results for a single fund share. Total return shows how much your investment in the fund would have increased (or decreased) during each period, assuming you had reinvested all dividends and distributions. These figures have been derived from the fund's financial statements.

Class A Shares	Year Ended May 31				
	2010	2009	2008	2007	2006
<b>Per Share Data (\$):</b>					
Net asset value, beginning of period	7.08	9.72	10.05	8.48	8.19
Investment Operations:					
Investment income (loss)-net <sup>1</sup>	.03	.05	.01	.02	(.02)
Net realized and unrealized					
gain (loss) on investments	1.25	(2.65)	(.32)	1.55	.31
Total from Investment Operations	1.28	(2.60)	(.31)	1.57	.29
Distributions:					
Dividends from investment income-net	—	(.04)	(.02)	—	—
Net asset value, end of period	8.36	7.08	9.72	10.05	8.48
<b>Total Return (%)<sup>2</sup></b>	18.08	(26.73)	(3.06)	18.52	3.54
<b>Ratios/Supplemental Data (%):</b>					
Ratio of total expenses					
to average net assets	1.35	1.31	1.35	1.29	1.25
Ratio of net expenses					
to average net assets	1.35 <sup>3</sup>	1.30	1.35 <sup>3</sup>	1.29	1.25
Ratio of net investment income					
(loss) to average net assets	.40	.70	.06	.18	(.24)
Portfolio Turnover Rate	35.17	40.27	21.97	22.75	78.54
Net Assets, end of period (\$ × 1,000)	13,252	42,532	15,066	15,411	11,573

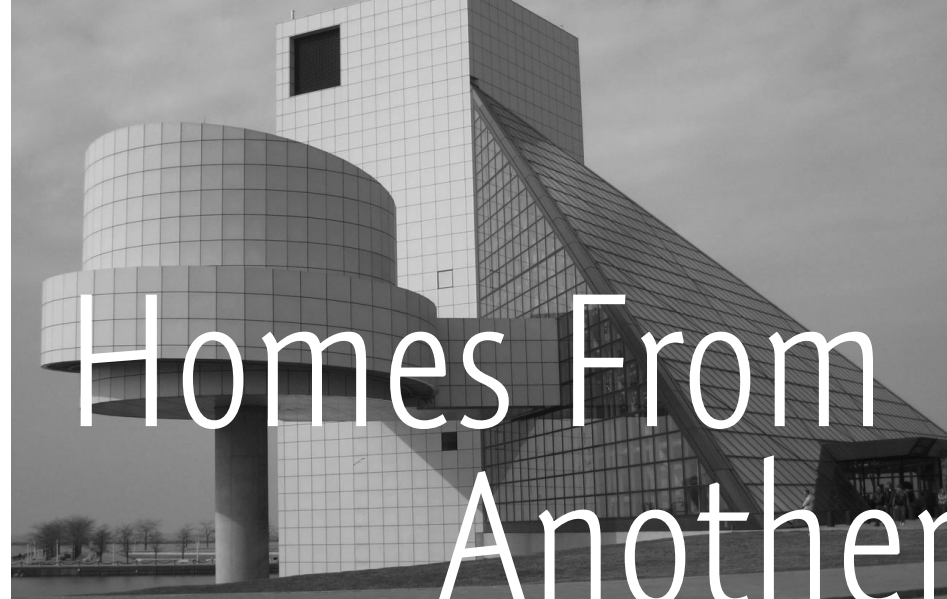
1. Based on average shares outstanding at each month end.

2. Exclusive of sales charge.

3. Expense waivers and/or reimbursements amounted to less than .01%

Expo Sans Pro and Expo Sans Pro Condensed ↑

Expo Serif Pro, Expo Sans Pro and Expo Sans Pro Condensed →



*When the citizens of Wonderbred, N.Y. voted for an urban initiative, they didn't get what they were hoping for.*

Written by Michelle Baines

Photos by Walter Matteson

**W**hen the New Bauhaus home debuted last March at the 2010 International Builders Show, it was cheekily billed as “the best home never built.” Presented as a 3-D online prototype, complete with a virtual walk-through tour, the unusual design envisioned how market demand for more assertive, flexible, and affordable homes might translate into architecture for the next wave of home buyers. Now that vision has become reality. The concept home that initially existed only on the Internet is now an actual house at Walker’s Pond, a futuristic neighborhood development by Barnhart Alliance in the town of Wonderbred, N.Y.

Barnhart built and sold this first one as a test project and has since signed contracts for five more, making the structure the leading plan among the neighborhood’s many options.

square feet in 2007 and have since declined, according to U.S. Census Bureau data. The average American home is almost 1,500 square feet, smaller than the average just two years ago.

### Finding the Right Space

Susan Barths and husband Michael mastered well the lessons of sustainable, multi-generational living. Three years ago, she and her husband became concerned about Michael’s grandmother and 70-something mother-in-law who were cramped in a one-bedroom apartment.

**“Social impact was on the table from Day One”**

flat they had purchased and which they were remodeling.

The older women took the two-bedroom bathroom garden apartment with separate entrance, so they could maintain their independence.

Because residents from different cultures, the older women generation embraced the “grandmas,” they actively call them into a third space.

As early as 1790 William Nicholson took out a patent for a machine which was to print with cylinders, but which was never built. Albrecht Bolza supported the German's claim to have invented the printing machine with these words: *"Ideas are often to be found when their time is ripe; to adopt them and announce them to the world is usually not difficult, but to find the means to transform them into reality needs a great man."* It will always remain a mystery why the idea of mechanical printing entered men's heads just about this time.

As early as 1790 William Nicholson took out a patent for a machine which was to print with cylinders, but which was never built. Albrecht Bolza supported the German's claim to have invented the printing machine with these words: *"Ideas are often to be found when their time is ripe; to adopt them and announce them to the world is usually not difficult, but to find the means to transform them into reality needs a great man."* It will always remain a mystery why the idea of mechanical printing entered men's heads just about this time.

As early as 1790 William Nicholson took out a patent for a machine which was to print with cylinders, but which was never built. Albrecht Bolza supported the German's claim to have invented the printing machine with these words: *"Ideas are often to be found when their time is ripe; to adopt them and announce them to the world is usually not difficult, but to find the means to transform them into reality needs a great man."* It will always remain a mystery why the idea of mechanical printing entered men's heads just about this time.

**As early as 1790 William Nicholson took out a patent for a machine which was to print with cylinders, but which was never built. Albrecht Bolza supported the German's claim to have invented the printing machine with these words: *"Ideas are often to be found when their time is ripe; to adopt them and announce them to the world is usually not difficult, but to find the means to transform them into reality needs a great man."* It will always remain a mystery why the idea of mechanical printing entered men's heads just about this time.**

**As early as 1790 William Nicholson took out a patent for a machine which was to print with cylinders, but which was never built. Albrecht Bolza supported the German's claim to have invented the printing machine with these words: *"Ideas are often to be found when their time is ripe; to adopt them and announce them to the world is usually not difficult, but to find the means to transform them into reality needs a great man."* It will always remain a mystery why the idea of mechanical printing entered men's heads just about this time.**

## Expo Sans™ Pro Condensed OpenType Features

All caps	(here's 6-8) ¿Que? → (HERE'S 6-8) ¿QUE?
Small caps	The FBI is Coming → THE FBI IS COMING
All small caps	The FBI is Coming → THE FBI IS COMING
Proportional oldstyle figures	1234567890\$¢£€¥ƒ%‰
Tabular oldstyle figures	1234567890\$¢£€¥ƒ%‰
Proportional lining figures	1234567890\$¢£€¥ƒ%‰
Tabular lining figures	1234567890\$¢£€¥ƒ%‰
Superiors/Superscript	E=mc <sup>2</sup> → E=mc <sup>2</sup> 2 <sup>nd</sup> 3 <sup>ème</sup> 4 <sup>th</sup>
Inferiors/Subscript	H2CO3 → H <sub>2</sub> CO <sub>3</sub>
Numerators	1234567890(\$¢-.,) → 1234567890(\$¢-.,)
Denominators	1234567890(\$¢-.,) → 1234567890(\$¢-.,)
Fractions	1/2 → ½, 3/8 → ¾, 5/16 → ⅝
Ligatures	fi fl ffi ffl
Historical forms	s → ſ
Ordinals	1 <sup>a</sup> 2 <sup>o</sup>
Ornaments	↔ → ↑ ↓ ← → ↑ ↓

